

# NOVA screens



## FEATURES

- Screens with metal frame, fabric or Plexiglas (Perspex)
- Designed for table combinations (benches) and individual tables

## TECHNICAL INFORMATION



### Fabric with metal frame

#### Screen composition

- Screen frame (20x20 mm): bottom and sides – tube, top – U profile;
- Made of 12 mm chipboard;
- Covered with VB2240 3 mm foam;
- Upholstered with fabric.

#### Fixing

- For NOVA U / A / O / H screens are fixed to the desktop with wood screws;
- NOVA U Slide fixed with bolts to metal frame.



### Fabric

#### Screen composition

- Made of 16 mm chipboard;
- Covered with VB2240 3 mm foam;
- Upholstered with fabric.



### Plexiglas (Perspex)

#### Screen composition

- 100 % recyclable matt and long-lasting surface (resistance to scratching and fingerprints) Plexiglas;
- Not suitable for NOVA U Slide (desk with sliding top).

## GUARANTEE

- 5 years

## RANGE

NOVA U, NOVA A, NOVA O, NOVA H

700, 710, 800, 810, 1200, 1400, 1440, 1600, 1640, 1800



With metal frame

700, 800, 1200, 1400, 1600, 1800



1200, 1400, 1600, 1800

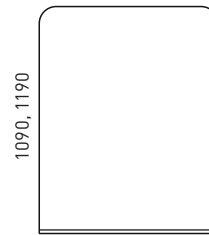


710, 800, 810



Fabric

1640



Fabric with bottom metal frame

540, 640, 1040, 1240, 1440, 1640, 1840



Plexiglas (Perspex)

NOVA U Slide

1400, 1600



1400, 1600



1400, 1600

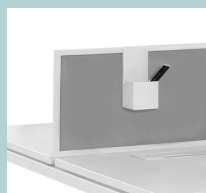


### Optional

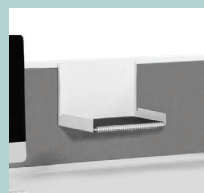
Metal trays hanged on the screen (for fabric and with metal frame screens):



Small tray



Pencil jar



Mail tray for A4 documents